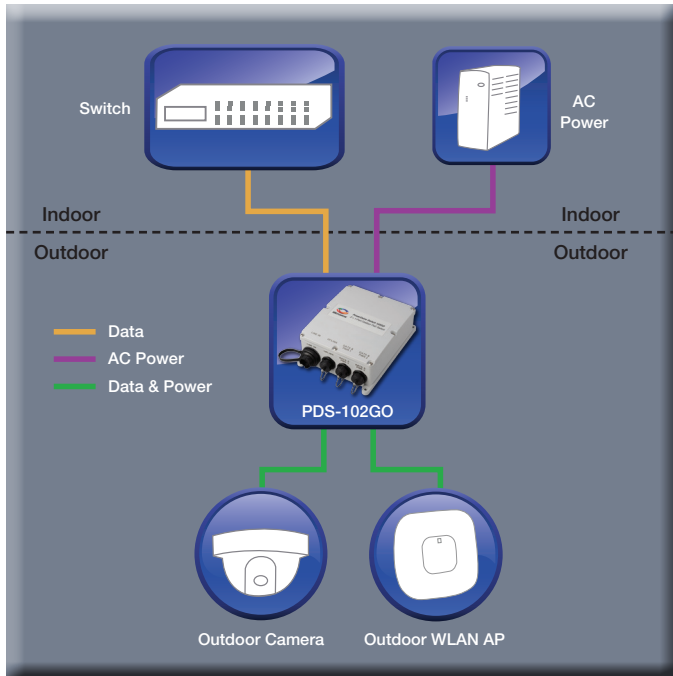


# PowerDsine PDS-102GO

2+1 outdoor switch, 30W per port , managed PoE, AC input



## Overview

The PDS-102GO is an outdoor PoE switch. It enables the connection of 2 powered devices to the network such as an outdoor WLAN, outdoor IP Camera and outdoor P2P radio.

The switch is IP66 rated and can be installed in outdoor environments. There is no need to open the unit during installation. Deployment is simple and straight forward.

The PDS-102GO will deliver PoE power up to 30W per device. In addition, it enables remote monitoring and control of the devices' status, including remote reset.

The 102GO extends the reach between the switch and powered devices by an additional 100m, to a maximum of 200 meters, a major benefit in many applications.

The PDS-102GO offers lightning protection to the switch itself and to the indoor network.

## PDS-102GO Features

- 3 ports – 1 data input, 2 PoE outputs
- Remotely managed – SNMP and web
- Extends network reach by additional 100m
- Outdoor rated: IP66
- Extended temperature range -40C , +65C for 802.3af
- IEEE802.3at compliant, 30W per port
- Supports 10/100/1000Mbps data rates
- Includes integral surge protection
- Plug 'n Play installation (installer does not have to open unit)

Power Matters.

## PDS-102GO Specifications

No. of Ports	3
Pass Through Data Rates	10/100/1000 Mbps (half/full duplex)
Power over Ethernet Output	Pin Assignment and Polarity: 1/2 (-) and 3/6 (+) Output Power Voltage: 54VDC User Port Power: 30W per port, 60W total
Input Power Requirements	Input Voltage: 100 to 240 VAC Input Current: 2.0A
Dimensions	214 mm x 150 mm x 70 mm 8.42 in. x 5.90 in. x 2.75 in
Weight	2.09 lbs (950g)
Indicators	No LED indicators
Connectors	Shielded rugged RJ-45 (with gasket)
Environmental Conditions	Operating Ambient Temperature: -40° to 122°F (-40 to 50°C) for 60W -40° to 149°F (-40 to 65°C) for 30W  Operating Humidity: Maximum 95%, Non-condensing  Storage Temperature: -40° to 185°F (-40° to 85°C)  Storage Humidity: 10% to 95%, Non-condensing  Operating Altitude: Up to 6,560 ft. (2000 m)  Weather Rating: IP66, NEMA 4X
Reliability	MTBF: 200,000 hrs. @25°C
Thermal Rating	41 BTU/Hr (@240VAC)
Warranty	1-year
Regulatory Compliance	IEEE 802.3at (PoE), RoHS Compliant, WEEE Compliant, CE
Electromagnetic Emission & Immunity	FCC Part 15, Class B EN 55022 Class B EN 55024, EN61000-4-5 Class 5 (6kV CM) VCCI
Surge Protection	Meets Surge Protection as specified in GR-1089-CORE Issue 4 ITU-T K.20 6 kV on AC lines
Safety Approvals	UL60950-1 & UL60950-22 GS Mark
Other Standards and Approvals	Dust and water intrusion: IEC60529, Level IP66; NEMA 250

## Ordering Information

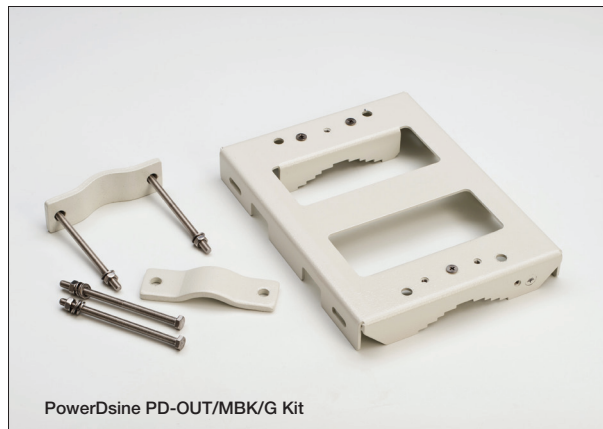
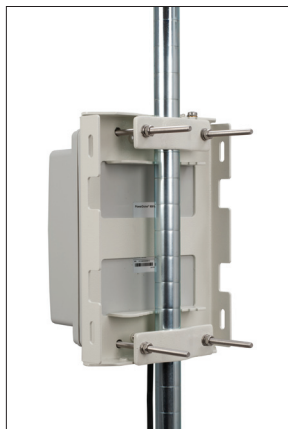
Part Number	Name	Description
PDS-102GO/AC/M	PowerDsine 2+1 Outdoor Switch	3-port PoE Outdoor Switch
PD-OUT/MBK/G	PowerDsine OUT/MBK/G	Mounting brackets for outdoor unit

# PDS-102GO PoE Outdoor Switch

## Management Capabilities

<b>System Network Management Capabilities</b>	Web Interface – used to view unit PoE & Network status, unit configuration and view unit production information.
	SNMP v2/v3 – Monitor unit over the network (MIB-II RFC1213), monitor / configure unit PoE capabilities (RFC3621).
	Telnet – used to view unit PoE & Network status, unit configuration and production information. Software update, Enable/Disable PoE functionality, ping remote Network device for connectivity test.
	SNMP Traps – used to report various PoE events as PoE PD insertion/removal.
	SysLog – used to report PoE events, Invalid remote user access, initial DHCPv4/v6 address, etc.
<b>Ethernet Switch Network Capabilities</b>	10M/100M/1000Mbit Half Duplex / Full Duplex Ethernet speed.
	8K internal MAC address lookup engine.
	Auto MDIX
	Jumbo frames
<b>PoE Capabilities</b>	IEEE 802.3at – delivers up to 30 Watts per port – View and statuses.
	PoE Enable/Disable – Enable/ Disable PoE ports Power output (Ethernet data is always enabled).
	Weekly Schedule – Automatic activation/deactivation of PoE ports based on time of day.
	Remote device reset – Turning temporary device power off and back on resets attached PD device.
<b>Configuration Options</b>	Web based: Via a WEB browser
	SNMPv1/2c/3: Via an SNMP management application on a remote computer
	Telnet: Via a Telnet application on a remote computer
<b>Security and User Authentication</b>	Web, Telnet, SNMPv2, SNMPv3

## PDS-102GO outdoor switch with outdoor mounting bracket



### For More Information

**North America**  
PowerDsineUSA@microsemi.com

**EMEA**  
(Europe, Middle East, Africa)  
PowerDsine@microsemi.com

**LATAM**  
(Latin America)  
PowerDsineLATAM@microsemi.com

**APAC**  
(Asia Pacific)  
PowerDsineAPAC@microsemi.com



Microsemi Corporation (NASDAQ:MSCC) offers the industry's most comprehensive portfolio of semiconductor and networking technology. PowerDsine® PoE Solutions, a Microsemi brand, is the thought leader in energy efficient, high power PoE technology. Learn more at [microsemi.com/powerdsine](http://microsemi.com/powerdsine)