

# VP165/24, VP250/57

## Mounting instructions



The antenna is shipped with a multi function mount that can be used to adjust the azimuth and elevation angle of the antenna.

Mount the plate without nut on the back of the antenna using the supplied metal screws. Bend the plate in a 90 degree angle. Bend and mount the plate with nut using the supplied screw and inset key.

The antenna can be mounted on a wall using the supplied wood screws or on a tube using a hose clamp (not supplied).

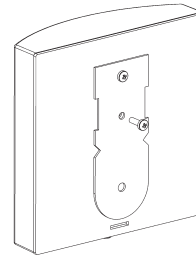
The antenna can also be mounted on a flat surface using double sided tape (not supplied).

**Polarisation / connector** The antenna is vertically polarised. The type SMA female connector shall be mounted downwards.

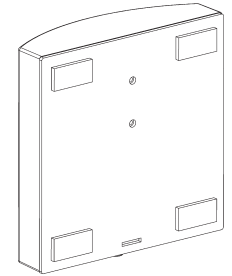
**Weather proofing** The type SMA connector is weather proofed with the supplied heat shrink tubing with melt glue. Use a hot air gun to apply the shrink tubing. The antenna shall not be mounted where it will be exposed to heavy rain. Mount it under a roof or in a protected environment.

**Surge protection** The antenna is DC grounded and hence no extra surge protection is required. Mount the antenna on a grounded tube or mast if available.

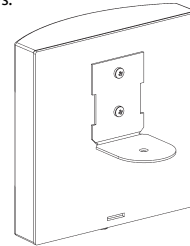
**WLAN Design Tools** On our home page you can use WLAN Design Tools, a set of online tools to optimise your link or network; use LinkBudget to calculate two-way link budget, AccessPointConfigurator (APC) to choose the best antenna for base stations and PolPlot to study the radiation pattern of the antennas.



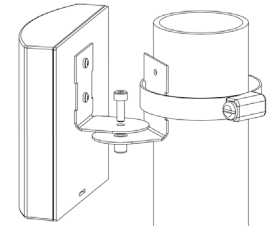
Mount the plate with the supplied screws.



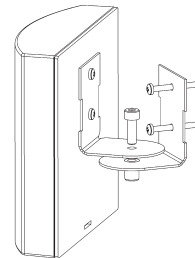
Use double side tape (not supplied) to mount on a flat surface.



Bend the plate in a 90 degree angle.



Use hose clamp (not supplied) to mount on tube.



Bend and mount the second plate (with nut) using inset bolt. Use wood screw (supplied) to mount on wall.

### component list (standard)

antenna	1 pc
bracket w/o nut	1
bracket w nut	1
M3 bolt	1
inset key	1
metal screw	2
wood screw	2
shrink tube	1



**SMARTEQ™**  
WIRELESS TELECOM

SMARTEQ Wireless AB  
Enebyberg, Sweden  
info@smarteq.se  
www.smarteq.com